

# WHAT DOES YOUR WINTER FUN OUTSIDE INCLUDE?

1 CLIMB A TREE



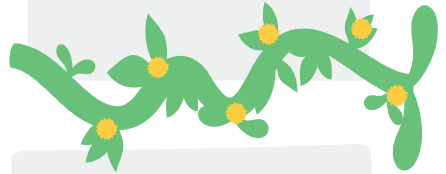
2 SPLASH IN A PUDDLE



3 PLAYING IN THE PARK



4 VISIT THE WINTER GARDEN



5 COLLECT WINTER FLOWERS



6 WALK, RUN OR BIKE YOUR BLOCK



TALK  
READ  
SING

In partnership with

**talking**  
matters

**Auckland**  
Council   
Te Kaunihera o Tamaki Makaurau